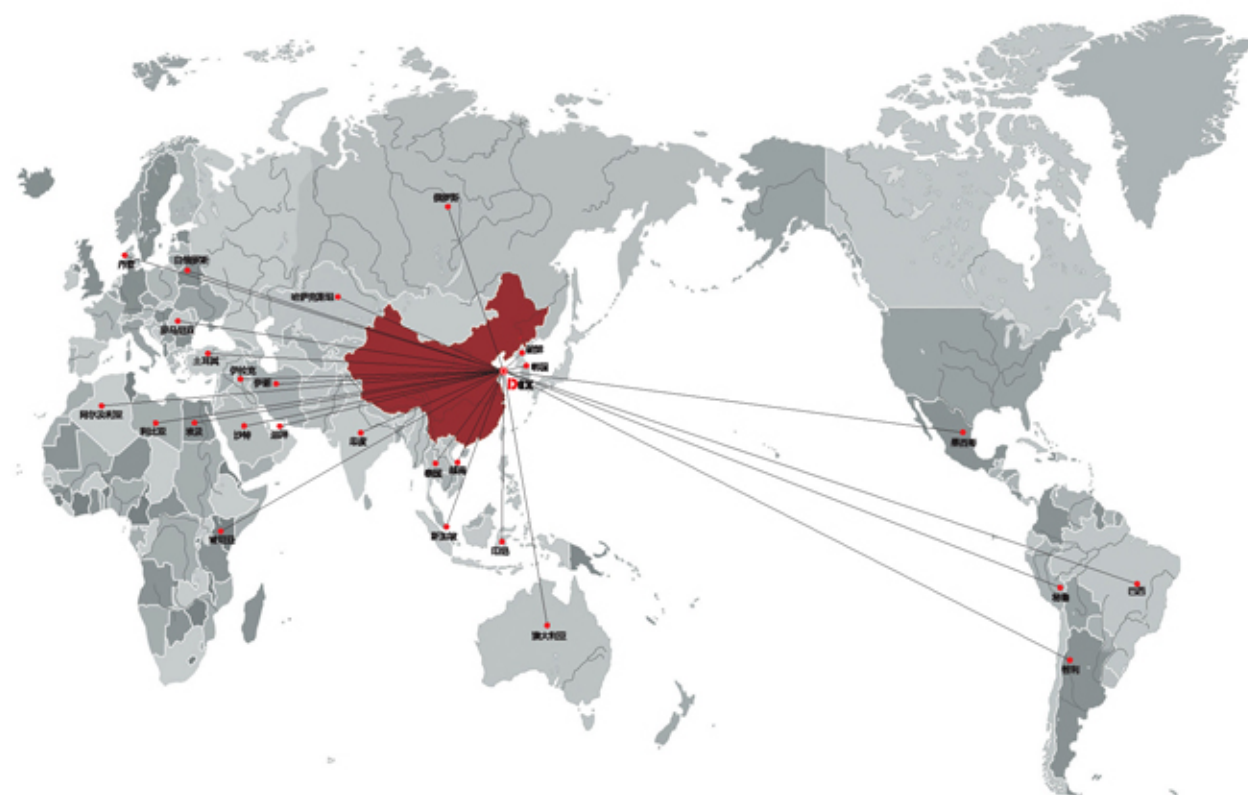


MPC对流式行星搅拌机
MPC COUNTER-CURRENT PLANETARY MIXER



搅拌方案解决专家
Mixing Solution Expert



青岛迪凯机械设备有限公司
QINGDAO DEX MACHINERY CO., LTD

中国大陆请联系：

地址：青岛市城阳区棘洪滩街道金岭工业园1号路

电话：0532-68016326/29

传真：0532-68016335

邮箱：info@dexmix.com

网址：www.dexmix.com

Oversea Sales Contact:

Add: Jinling Industrial Park, Chengyang District,

266111 Qingdao, P. R. China

Tel: +86 532 6895 4300

Fax: +86 532 6895 4311

E-mail: sales@dexmix.com

http://www.dexmix.com

企业简介 COMPANY PROFILE

青岛迪凯机械设备有限公司是一家从事搅拌设备的设计开发、加工制造及销售服务的专业化公司，拥有多项国家专利及正式注册的知名商标。

公司自创建以来，一直秉承科技兴企，以人为本的宗旨和诚信为本，追求卓越的理念；坚持与时俱进、开拓创新的作风和简单、高效、执行的管理思想。迪凯机械先后与多家同行业的欧洲知名公司及科研机构紧密合作，集欧洲先进技术及多年实践经验于一体，开发出技术先进、性能可靠的系列搅拌成套设备。

迪凯机械在加工制造过程中实行全面的质量管理，严格执行ISO9001质量管理体系的要求。关键的电气元器件和液压、气动部件均采用国际知名品牌，以保证向客户提供质量优良，运行可靠的设备。迪凯机械现已开发出拥有自主知识产权的一系列搅拌设备，以满足不同客户的需求。经过全体员工的不懈努力，迪凯产品以其优异的品质，先进的技术和良好的信誉，赢得了客户的肯定和认可，产品已遍布国内各个行业，并销售到东南亚，欧洲，南美、非洲和中东等海外市场。

欧洲科技，臻臻至善——您值得信赖的搅拌方案解决专家。



Qingdao DEX Machinery Co., Ltd is a professional manufacturer in design and research, manufacturing, sales and service on mixing equipment. We owned many national patents and registered trademarks.

Since founded, we uphold the principle of 'people-oriented', 'science and technology enterprise', and regard 'honesty', 'pursuit of excellence' as our company philosophy. We persist on the idea of 'keep pace with the times', 'pioneering and innovation', and our management idea is simple, efficiency and execution. Cooperated with world-famous enterprises and research institutes, combining the advanced Europe technology with years' practical experience, we have successfully developed series of mixing equipment with advanced technology and reliable performance.

In the manufacture process, we adopt integrated quality control, and have passed ISO9001 international authentication. We adopt world-famous brand for the key electronic elements, pneumatic and hydraulic systems to ensure high quality and reliable of the mixing equipment. Now, DEX has developed a complete range of mixing equipments with independent intellectual property to meet different customers' requirement. After the unremitting efforts of all staffs, DEX won the approval and trust of the customers with the excellent performance, advanced technology and good reputation. Now our equipments are widely used in various fields of China and have exported to Southeast Asia, Europe, South America and Middle East.

Europe technology, perfect performance- we are the mixing solution expert that you can trust.

MPC对流式行星搅拌机 MPC COUNTER-CURRENT PLANETARY MIXER



性能特点 / Features

- DEX对流式行星搅拌机采用了全新的对流行星搅拌理念，能在最短的时间内使物料达到高匀质性。
- 适用于搅拌各种高品质、高性能的混凝土，并广泛应用于玻璃、陶瓷、耐火材料、肥料等特殊行业。
- DEX MPC counter-current planetary mixer can mix all kinds of high-quality and high-performance concrete, and which can reach homogenous mixing at shortest time.
- It can also be used for glass, ceramics, refractories, fertilizer and etc.

对流传动系统（专利技术）/ Counter-current Gearing System (Patent Technology)

- 搅拌自转方向与整套搅拌装置的公转方向相反，不同搅拌行星间的方向也不同，搅拌过程中物料既有循环运动又有对流运动，相反方向运动的物料相互对流冲击，使各组分充分接触及结合，真正达到微观上的均匀分布。
- The rotated direction of mixing stars is reversed with the revolution direction, and each mixing star's direction is also different. The circulation movement and convective movement make the material severely mixing and achieve the uniform distribution in microcosm.

对流搅拌装置 / Convection Mixing Device

- 高效率，低能耗。
- 相同物料配比时，搅拌时间比传统行星式搅拌机缩短15-20%。
- 空载电流及负载电流均比传统式行星搅拌机低15-20%。
- High mixing efficiency, low energy consumption.
- Compared with traditional planetary mixer, the mixing time of MPC can be reduced 15~20%.
- The no-load current and load current with same material can be 15~20% lower.

人性化设计，安全性能高

Humanization Design, High Safety

- 接线盒上设有急停开关，确保紧急情况时能立即断电，检修时取下钥匙确保搅拌机不会误启动。
- 检修门上设有高灵敏高可靠性的开关，以便检修时更加安全方便。
- The key-operated emergency stop in junction box can stop the mixer immediately in case of emergency. Take off the key in maintenance to ensure the safety.
- High sensitive switch in maintenance gate guarantees the motor can not be powered with gate open.

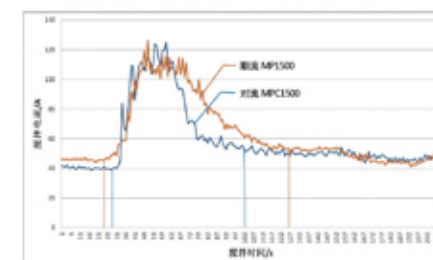
易于保养，方便维护 / Easy Maintenance

- 全自动润滑泵可提高减速机寿命，减少日常维护工作量。
- 大尺寸检修门及内部空间，方便人员维修及更换易损件。
- Automatic Greasing pump can prolong service life of gearbox and reduce the routine maintenance.
- Large maintenance gate and inside space is convenient for maintenance and spare parts replacement.

对流 / 顺流 行星式搅拌机电流实测曲线 / Mixing Current Curve

测试机型：对流MPC1500 / 顺流MP1500

测试时间：2016.2.26 测试地点：武汉



省时：（提高效率）：32.71% 综合省电：39.46%
空载电流低：11.55%

MPC对流式行星搅拌机

MPC COUNTER-CURRENT PLANETARY MIXER



对流传动装置 (核心技术)
Counter-current Gearing System
相比普通传动系统, 对流传动系统传动效率较高, 搅拌效果卓越且节省能耗, 寿命长久。
The counter-current gearing system has higher transmission efficiency, excellent mixing result and longer service life.



对流搅拌装置
Counter-current Mixing Device
对流搅拌装置使搅拌轨迹更复杂, 搅拌效率更高效; 传动载荷分配合理, 卸料迅速, 无堆积现象。
The counter-current mixing device makes the complex mixing locus and high-efficient result. The reasonable load distribution of gearing system gives fast and thorough discharging.



大尺寸检修门
Large Maintenance Gate
筒盖口加大, 无需拆卸任何上料装置即可将减速机从检修口提出。同时检修门上方设有观察口, 可实时观察筒内搅拌情况。
The large maintenance gate with observe port can help to check the mixing condition during mixer running. Enlarged upper port in the cover can help gearbox out directly.



多种转速配置
Multiple Rotated Speed Configuration
多种转速的传动系统配置, 针对不同物料, 不同工况, 搅拌机的应用范围也更加广泛。
The multiple rotated speed configuration can satisfy different material and most working condition, which makes the mixer wider application.



液压卸料装置
Hydraulic Discharge Device
液压泵站可同时满足多卸料门需求, 并设有手动泵, 可在断电情况下手动开门。
Hydraulic unit equipped with manual pump allows the door be opened in case of electric failure, Maxmium 3 discharge doors are available.



高铬合金铸造衬板
Cr-hard alloy cast iron liner



耐磨钢板 / Hardox liner



堆焊衬板 / Hard surfacing material liner



聚氨酯叶片 / Polyurethane blade

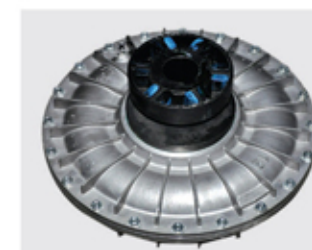


不锈钢叶片 / Stainless steel blade

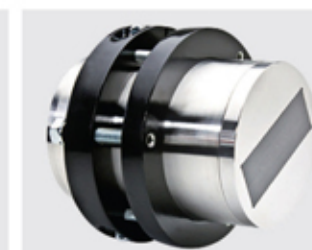
MPC对流式行星搅拌机

MPC COUNTER-CURRENT PLANETARY MIXER

选配项 / OPTIONS



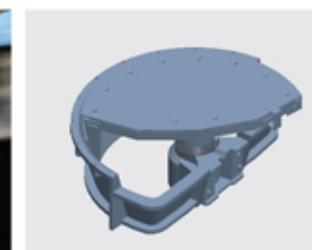
液力耦合器
Hydraulic Coupling



湿度传感器
Moisture Sensor



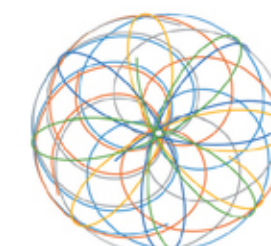
高压清洗装置
High Pressure Washout System



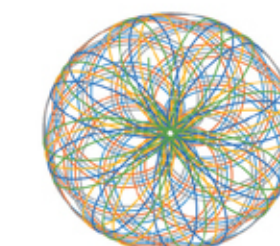
一体式卸料门
Integrated Discharge Door

搅拌运行轨迹图 / Mixing Locus Diagrams

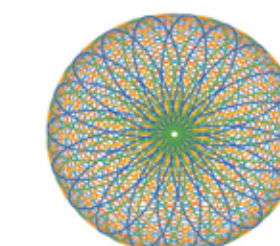
DEX对流式行星搅拌机在投料后6S到60S的搅拌运动轨迹, 搅拌行星每运转四转 (6S) 就能完全覆盖一次搅拌罐底, 无任何死角。
The diagram show the perfect mixing action of the DEX planetary mixer from 6 to 60 seconds after materials added. Note that the floor is completely swept by the mixing star's action every 4 revolutions (6 seconds) and that each zone is covered at regular intervals in time.



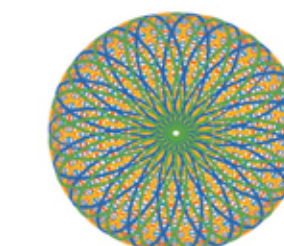
6S



18S



30S



60S

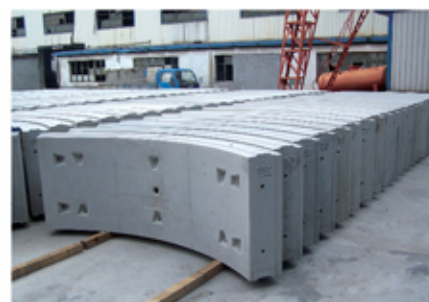
技术参数 / Specifications

项目 Item	MPC	50	100	150	250	330	500	750	1000	1250	1500	2000	2500	3000
进料容量 Filling Volume	L	75	150	225	375	500	750	1125	1500	1875	2250	3000	3750	4500
进料容量 Feeding Capacity	Kg	120	240	360	600	790	1200	1800	2400	3000	3600	4800	6000	7200
出料容量 Output Volume	L	50	100	150	250	330	500	750	1000	1250	1500	2000	2500	3000
搅拌功率 Mixing Power	Kw	4	5.5	7.5	11	15	18.5	30	37	45	55	75	90	110
行星*搅拌叶片数量 Mixing Star*Mixing Blade	Qty	1*2	1*2	1*2	1*2	1*2	1*3	1*3	2*3	2*3	2*3	3*3	3*3	3*3
侧刮板数量/卸料刮板数量 Side Scraper/Discharge Scraper	Qty	1/-	1/-	1/1	1/1	1/1	1/1	1/1	1/1	1/1	1/1	1/2	1/2	1/2
卸料功率 Discharging Power	Kw	气动卸料 Pneumatic Discharging					2.2	2.2	2.2	3	3	3	4	4
搅拌桶直径 Diameter	mm	750	1000	1300	1300	1600	1900	2200	2500	2500	2800	3400	3400	3400
整机重量 Weight	Kg	500	850	1300	1500	2200	2500	3500	5500	6000	6500	8500	10500	11000

注: 由于我们不断对产品进行性能完善和技术改进, 产品参数以实物为准。
Technical data may change due to technical progress. Subject to modification without notice.

应用领域 APPLICATION

混凝土 Concrete	其他建材 Other Construction Material	耐火材料 Refractory Material	其他行业 Others
商品混凝土 Ready-mixed concrete	干粉砂浆 Dry mortar	定型材料 Shaped refractory material	玻璃搅拌 Glass
预制混凝土 Precast concrete	湿砂浆 Wet mortar	不定型材料 Unshaped refractory material	农用肥料 Fertilizer
泡沫混凝土 Foam concrete	石膏 Gypsum		废料处理 Waste treatment
颜料混凝土 Color concrete	骨料混料 Aggregate mixing		矿井回填 Mine backfill
轻质混凝土 Light concrete	乳化沥青 Emulsified asphalt		
喷射混凝土 Shotcrete	水泥粘合剂 Cement adhesive		



应用案例 JOB SITE

